





Cindre designed this super light, yet very strong, modular casework system for manufacturers who need an environmentally sound and better system. The system provides better solutions for you, your customers, and our planet.

Sustainability

We take sustainability to the next level by delivering all four pieces of the sustainability puzzle, helping you save time, energy, money, and our planet.

Foundation

A solution is not a solution without a solid foundation; our product is based on better materials, original design and parametric BOMs.

Product

Our system is light weight, extremely strong, stainless and lasts much longer than conventional cabinets.

Sustainability

Cindre believes that being “green” is not just about the use of sustainable materials or recycling. The greenest idea of all is not throwing products away in the first place. We believe there are four pieces to the sustainability puzzle, and this product puts them together for you!



Sustain

We used the most sustainable materials and by design reduce waste during manufacturing to a minimum.

Reuse

The product is expressly designed for reusability and reconfigurability, thus greatly increasing its overall life cycle.

Repair

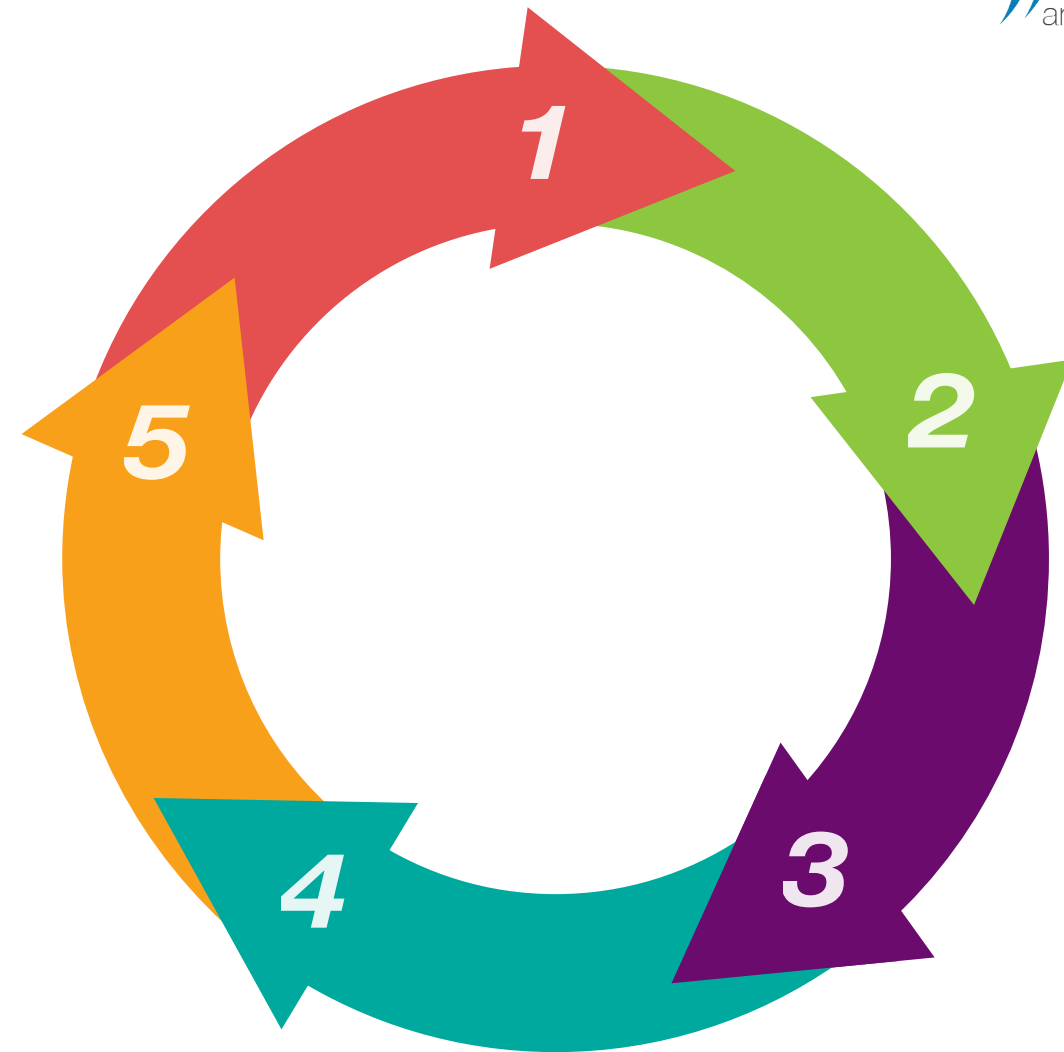
The product’s construction is modular as well; this allows for it to be taken apart and repaired with ease if need be.

Recycle

Once the maximum lifespan of our product has been reached, its components are near 100% recyclable.

Foundation

Cindre's aluminum modular storage system was developed to address the storage needs of the future. We offer a product with a solid foundation, resulting in a full circle solution for you.



1

Engineering

We have fully engineered the product down to the last detail.

2

System

The product is based on a system that is universal and parametric.

3

Materials

Made of aluminum or ABS the products are lighter, stronger & stainless.

4

Industry Standard

The design is based on 32mm construction principles.

5

Aesthetics

The system supports a very wide range of exterior finish options.

Product

This storage system was designed for today and the future.

The product is a true modular system with an all-metal or ABS construction, space age materials, and works with virtually any hardware designed to be used with the 32mm system.

We designed it to be the best value available on the market today.

Custom finishes for sides and tops

Aluminum frame or any solid doors

Optional container & divider system

Height adjustable push handle and accessory rails

Digital or mechanical locks, same lock core

Drawer system, works mounted directly or in container system

Rolling platform or stationary toe kick

Heavy duty dual wheel casters



All types of cabinets



Base



Wall

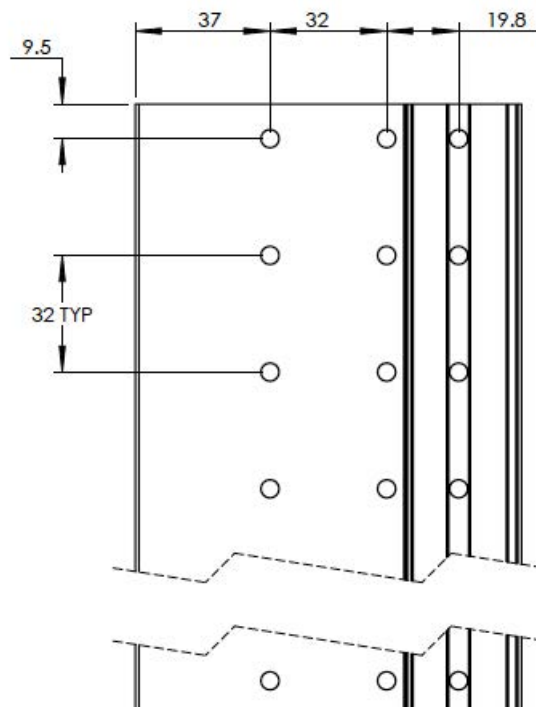


Tall

Case Design

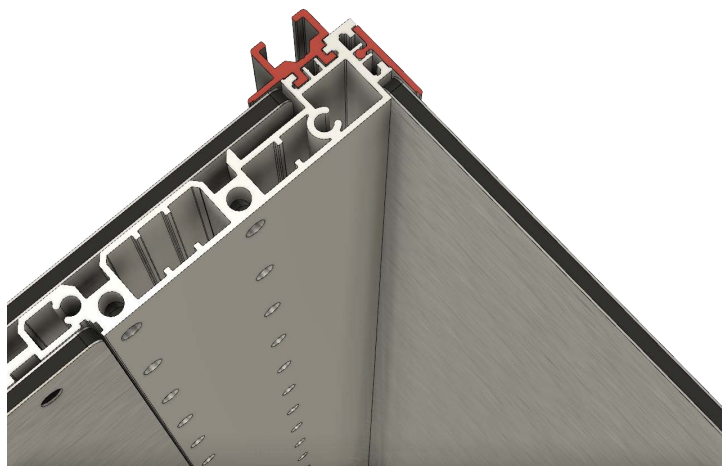
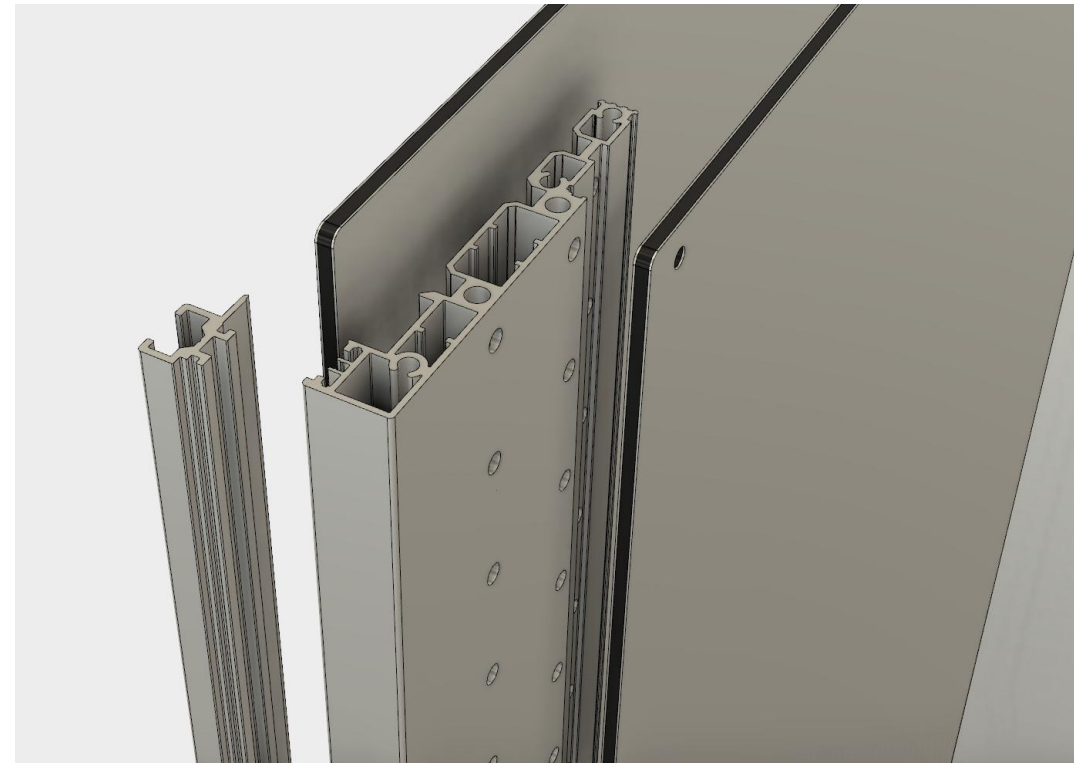
- ✓ Frame and panel design
- ✓ System holes = construction holes
- ✓ Hole patterns support 32mm system
- ✓ All off-the-shelf hardware fits
- ✓ Can create almost any cabinet
- ✓ Supports parametric BOMs

[Click on image to start animation](#)



Side Panel

- ✓ Extrusion for frame
- ✓ Hole patterns pure 32mm system
- ✓ Fantastic strength
- ✓ Accepts accessory extrusions
- ✓ Double wall construction



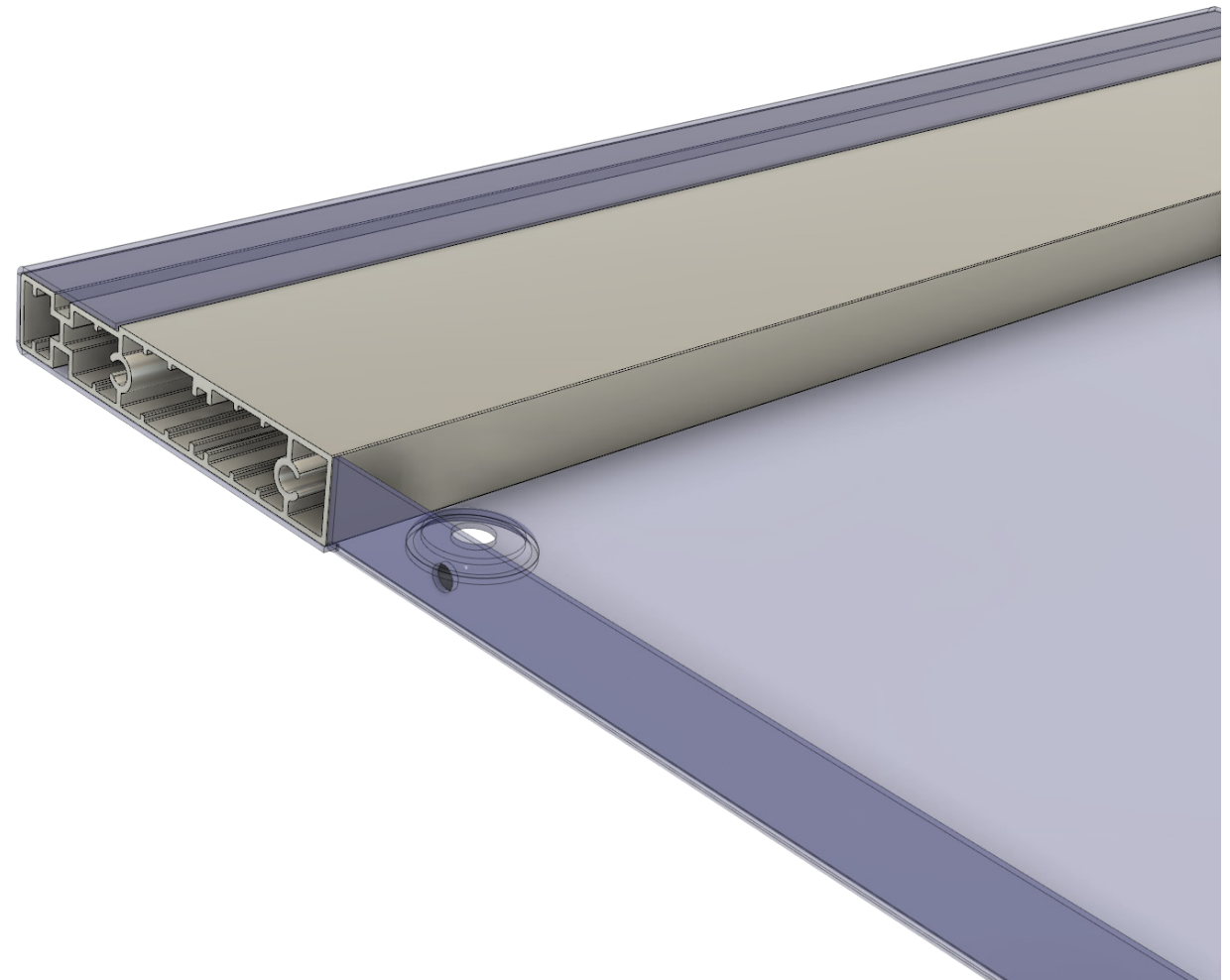
Top & bottom panels, ACP

- ✓ Extrusion for frame
- ✓ Cavities for stiffener bars
- ✓ ACP panels
- ✓ Screw bus joints



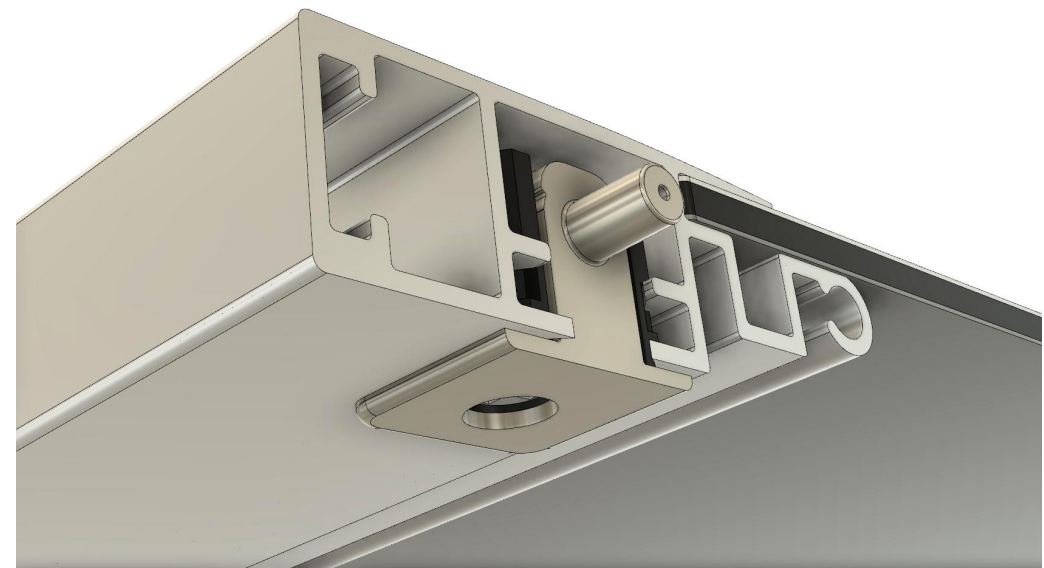
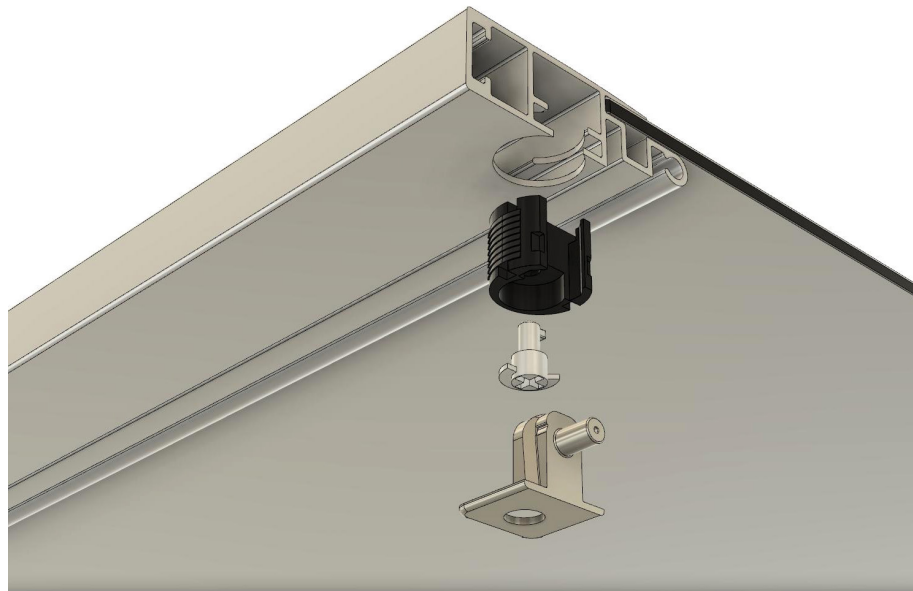
Top & bottom panels, pan

- ✓ Extrusion for frame
- ✓ Cavities for stiffener bars
- ✓ Aluminum, steel or stainless pan
- ✓ Screw bus joints



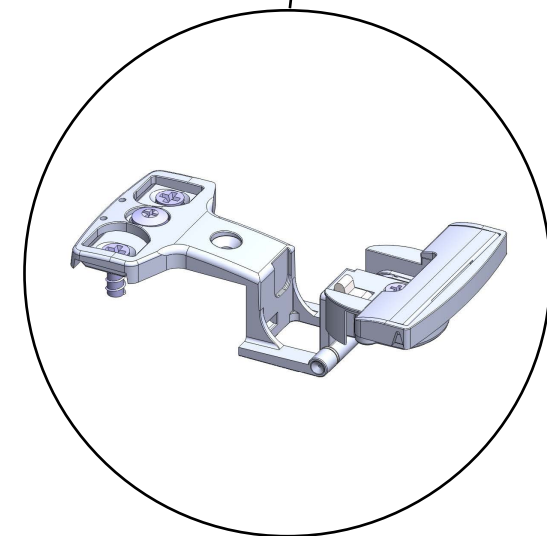
Components: adjustable shelf

- ✓ Extrusion for frame
- ✓ Cavities for stiffener bars
- ✓ Accepts wood panel RTA hardware
- ✓ Lockable shelf



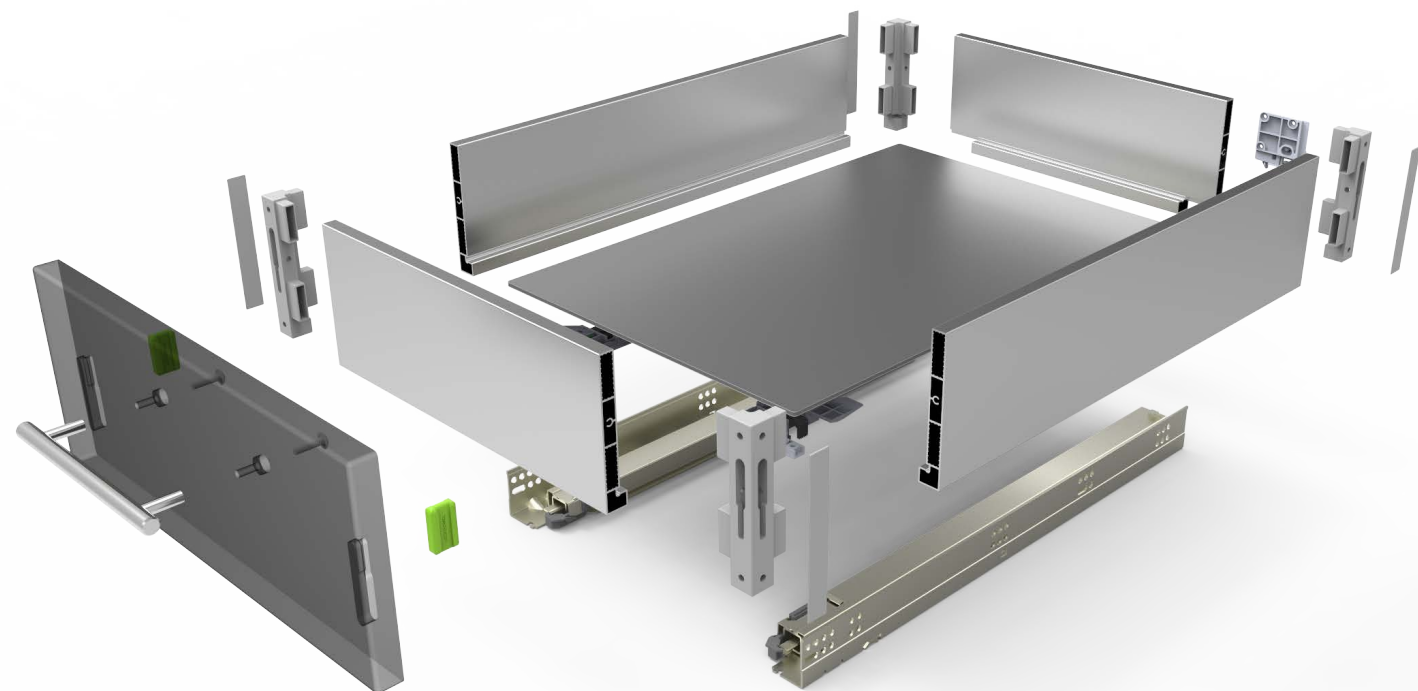
Doors

- ✓ Swinging, sliding or roll up doors.



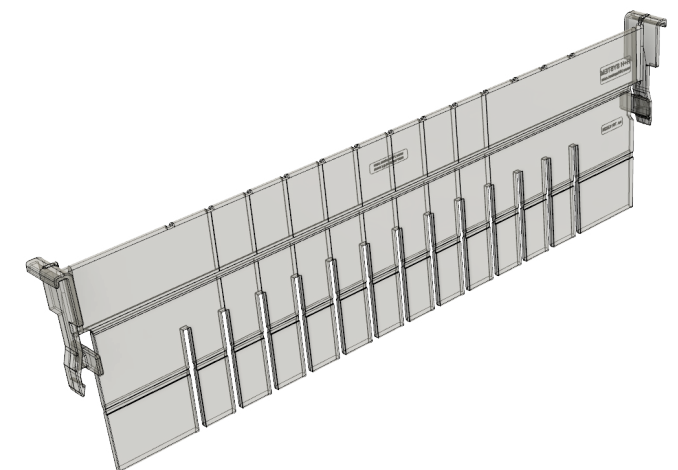
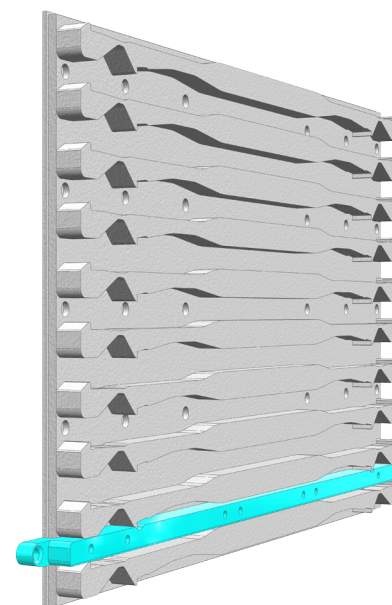
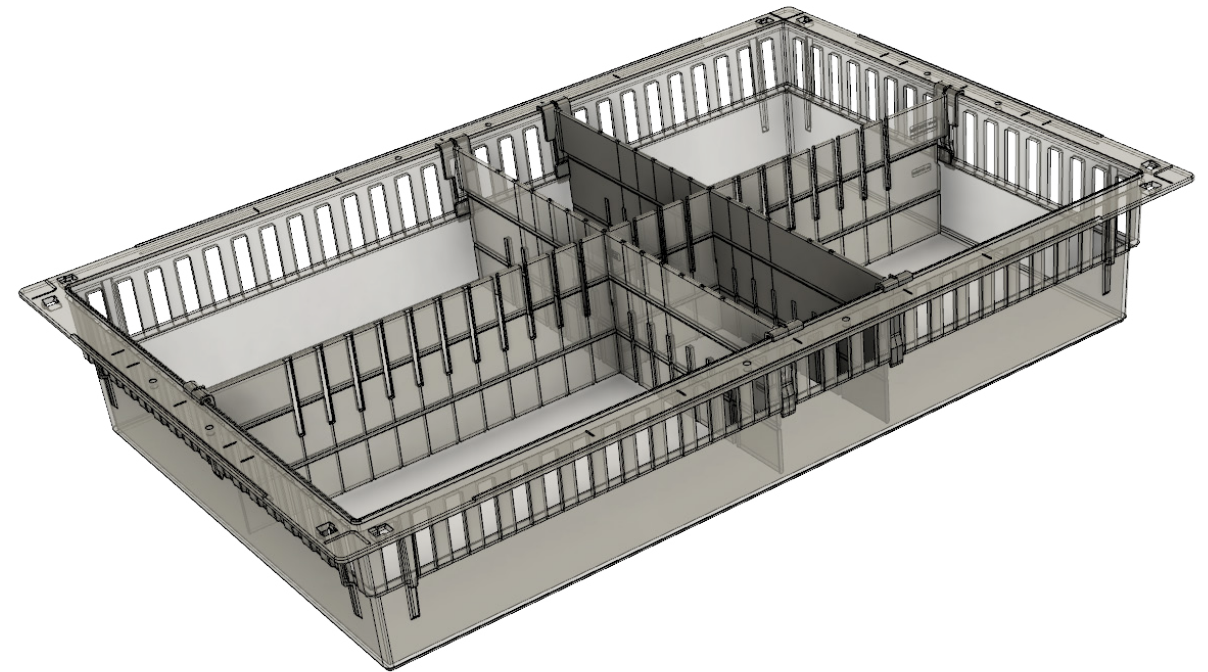
Drawers

- ✓ Will work with virtually any slide designed for the 32mm system
- ✓ Supports parametric BOMs
- ✓ Aluminum or ABS box, ACP, ABS or phenolic bottom
- ✓ Designed for H+H dividers
- ✓ Can work as module in H+H System, allowing direct external access



H+H[®] system integration

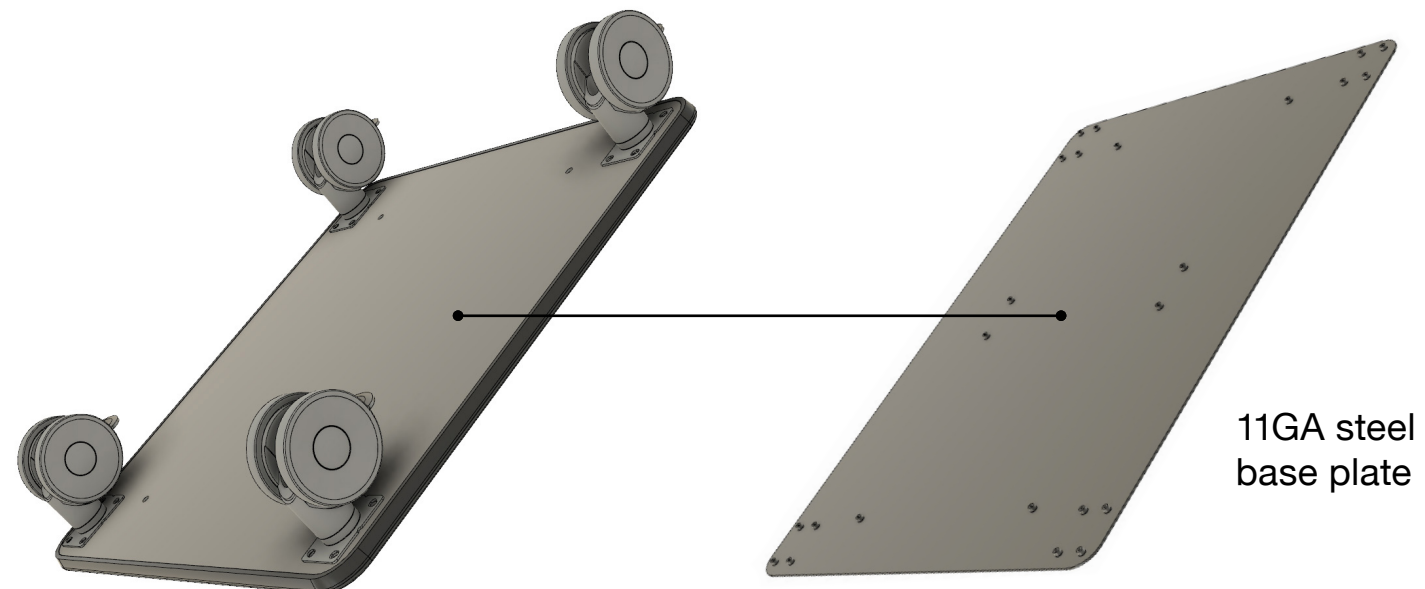
- ✓ 50, 100 and 200mm tubs
- ✓ 100 and 200mm wire baskets
- ✓ High density, on 32mm centers in height
- ✓ Non-egg crate locking dividers
- ✓ Customizable dividers
- ✓ Bi directional front to back
- ✓ Injection molded = best quality
- ✓ Integration of drawer system



Mobile Base

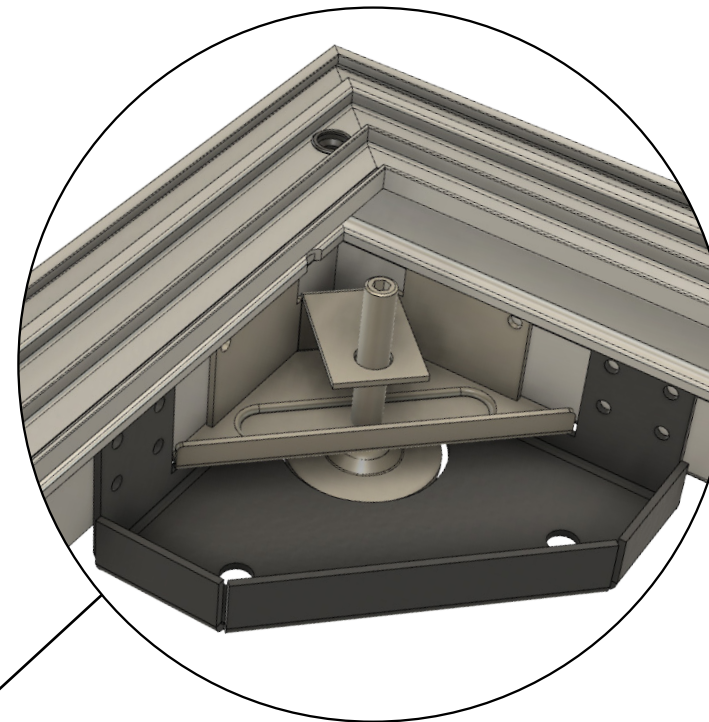
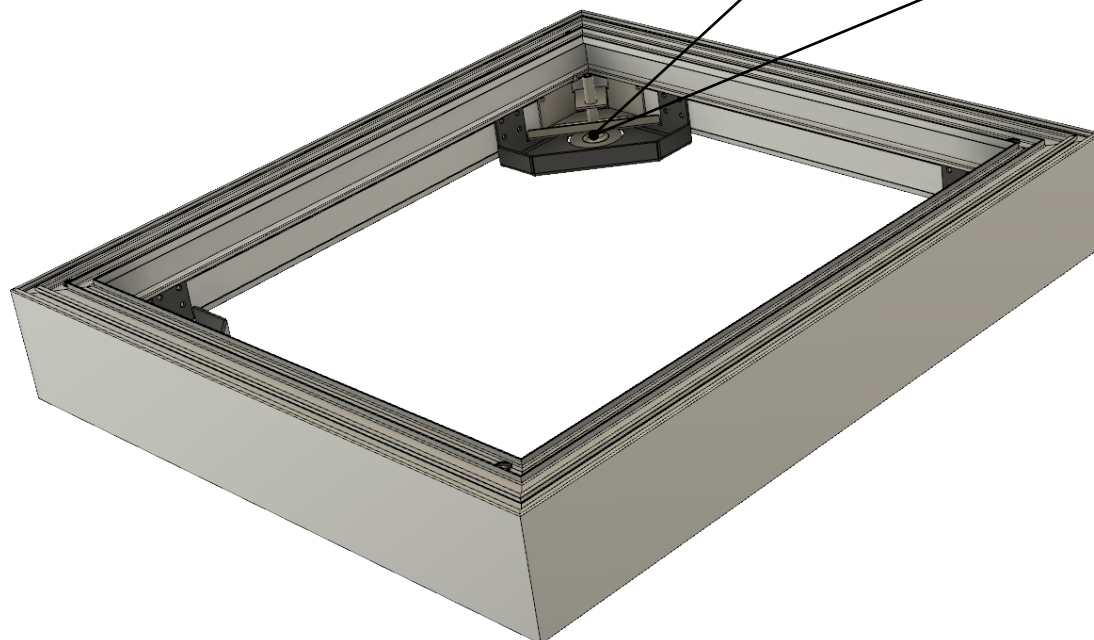
- ✓ Made of MDF with a Kydex® high impact skin permanently molded over it
- ✓ Pretty and incredibly strong
- ✓ 11GA steel backer plate for added strength and a low CG
- ✓ Shares bolt down hole pattern for cases with the aluminum base

Rolling platform with
Kydex® RTF skin
11GA steel

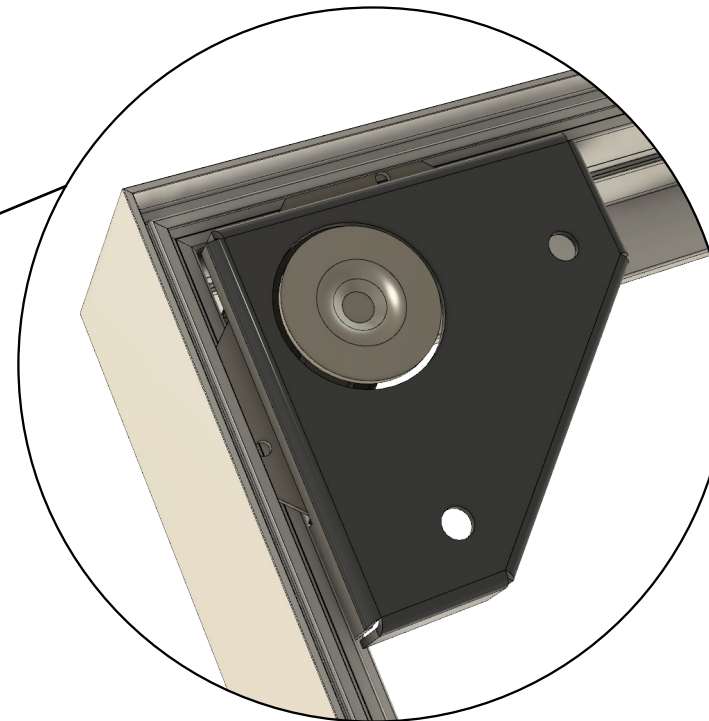


Base

- ✓ 2", 4" and 6" heights
- ✓ Waterproof, super clean
- ✓ No mold and mildew
- ✓ Supports 2,500 lbs per base
- ✓ California OSHPD OPM-13 seismic pre approved
- ✓ Bolt on system for cabinet same as rolling platform



TOP VIEW
Leveler with
seismic bracket

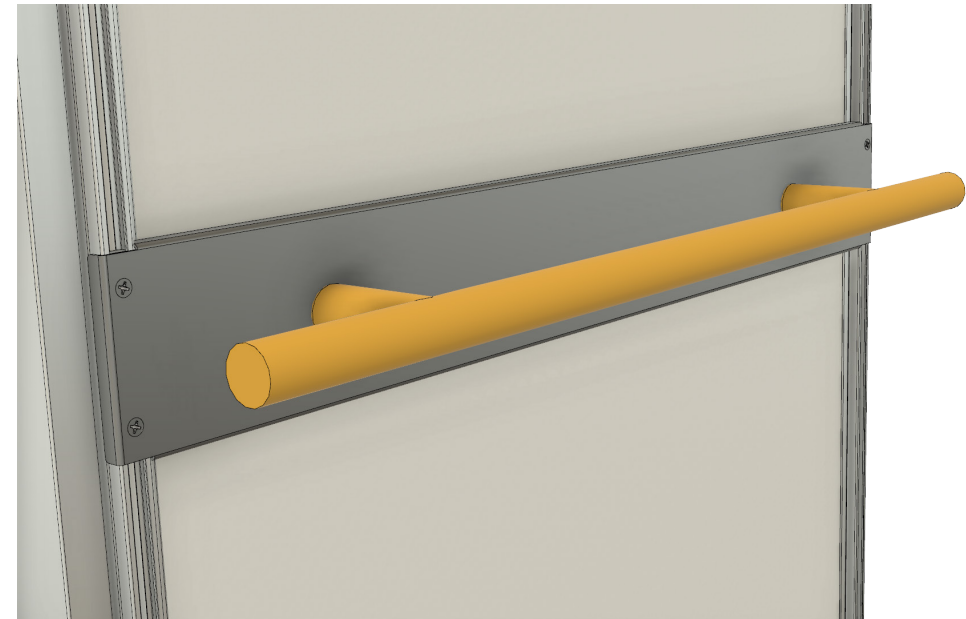


BOTTOM VIEW
Leveler with
seismic bracket

Patent Pending

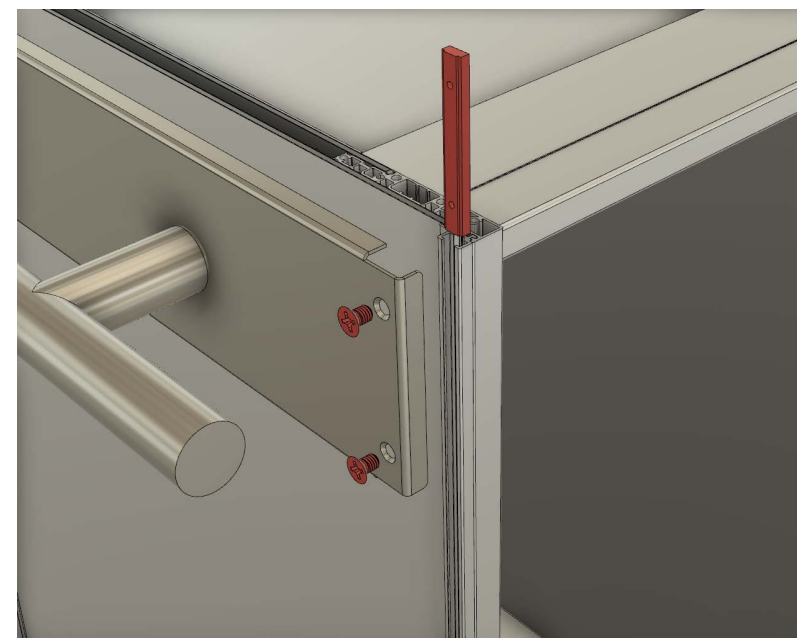
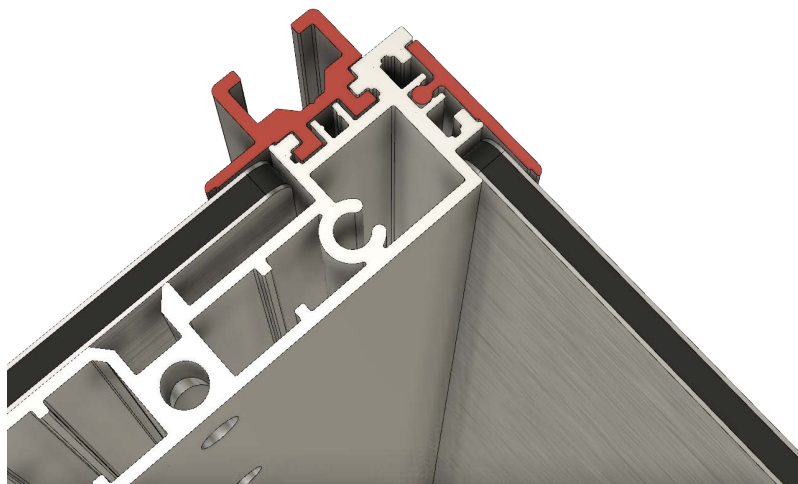
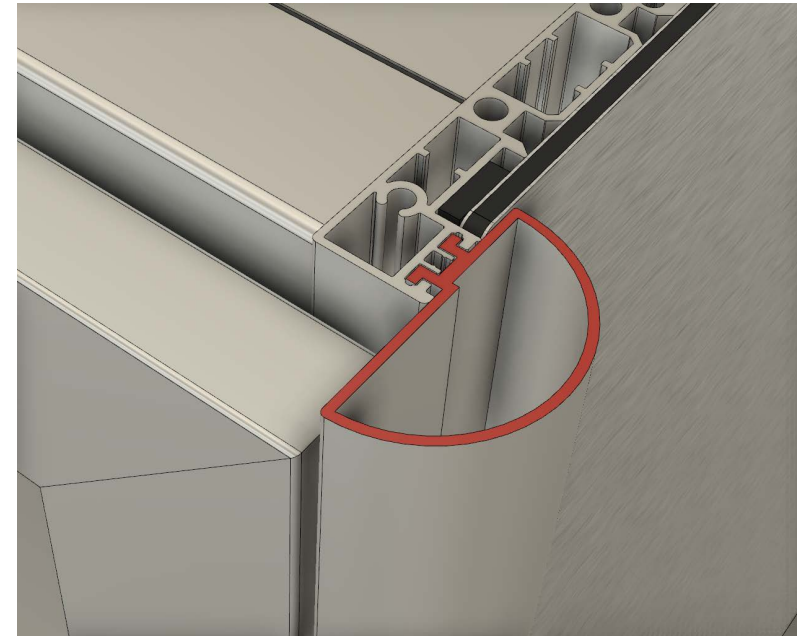
Handles

- ✓ Use any handle
- ✓ Creates decorative accent
- ✓ Push handle height adjustable



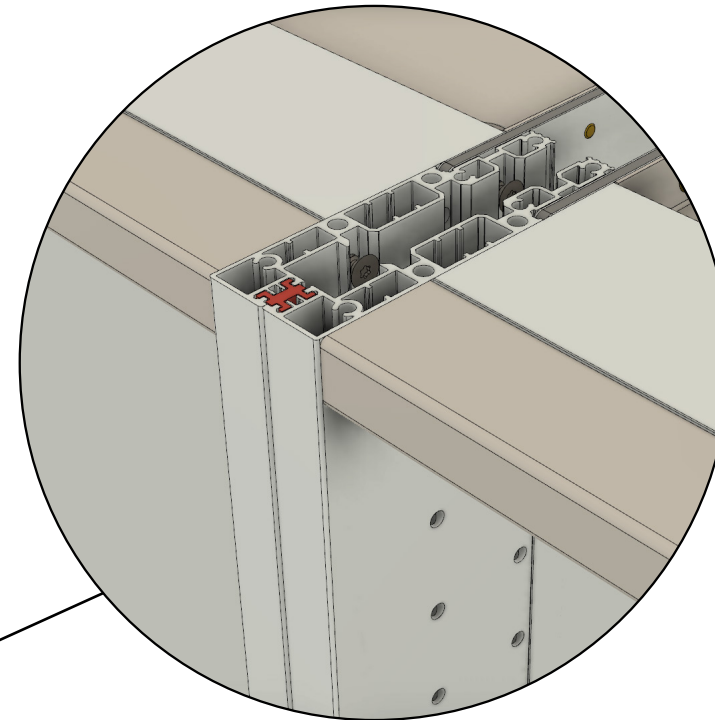
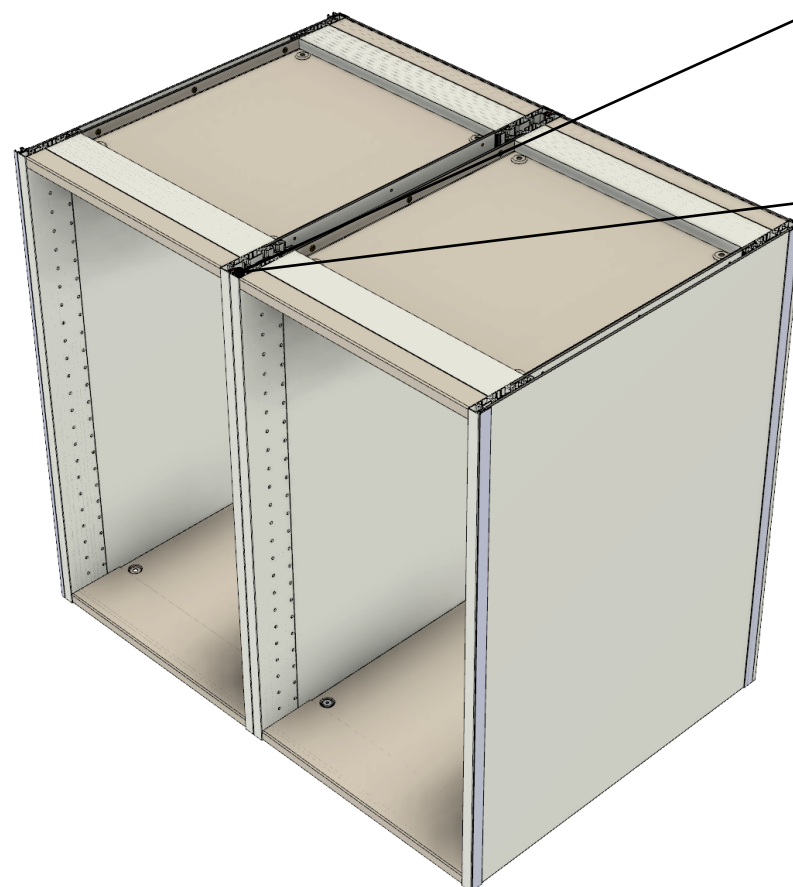
Zipper Channels

- ✓ Used to hold end cap
- ✓ Used to fasten hanging rail
- ✓ A means to fasten decorative corners

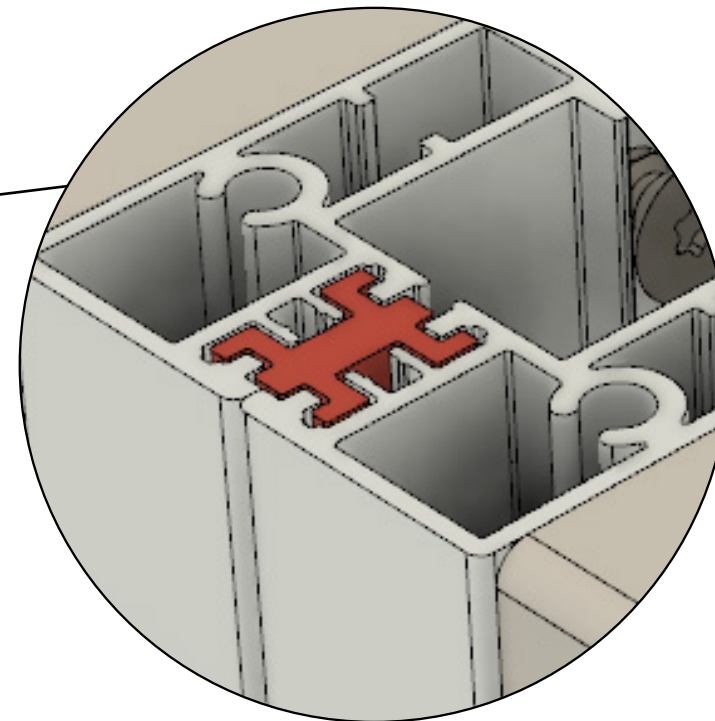


Zipper Rail

- ✓ Ties cabinets together invisibly
- ✓ Incredibly strong
- ✓ Works side to side as well as back to back



TOP VIEW
Zipper rail

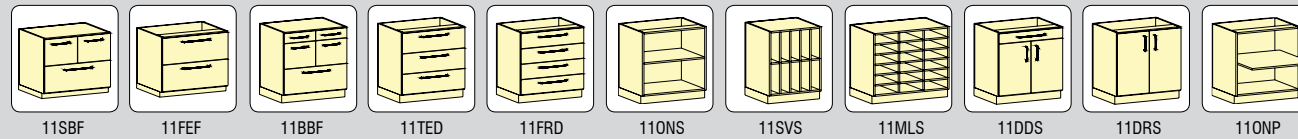


Zipper rail in
Zipper channels,
detail

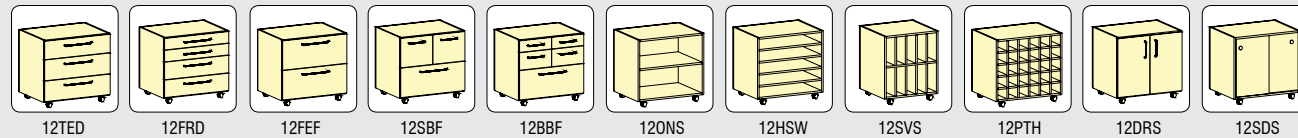
Graphical Casework Overview

Overview of some of the possible configurations.

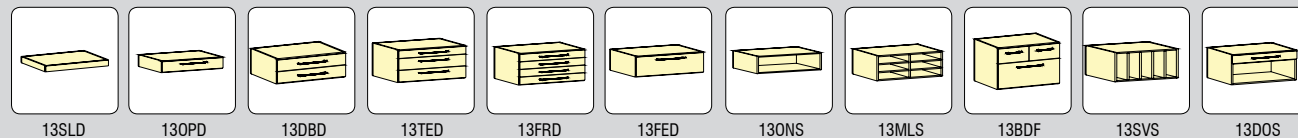
11 Pedestals



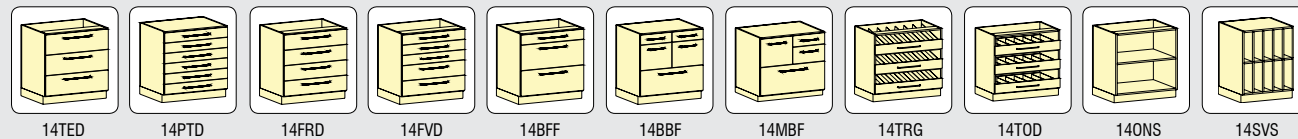
12 Mobile Cabinets



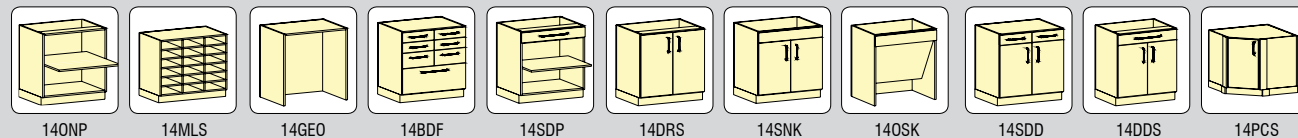
13 Suspended Cabinets



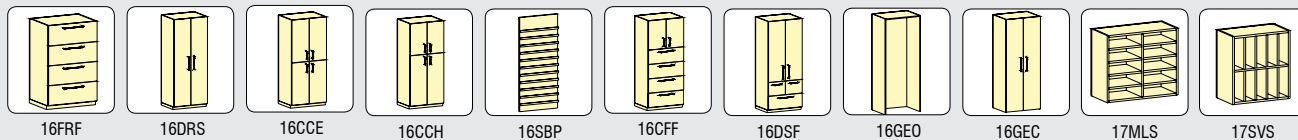
14 Base Cabinets



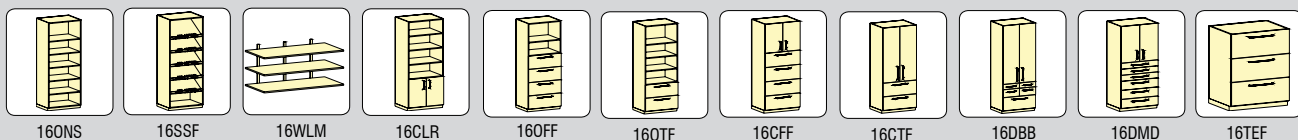
14 Base Cabinets



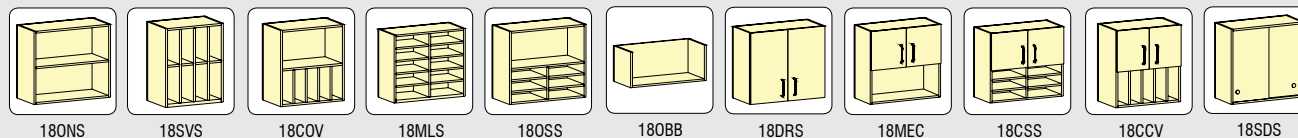
16 Tall Cabinets



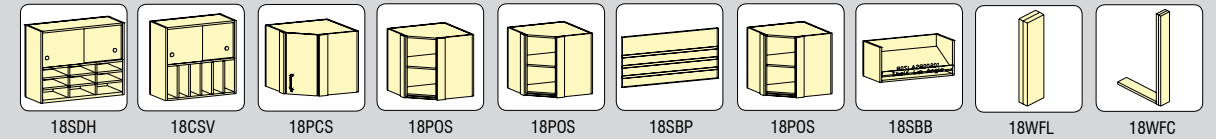
16 Tall Cabinets



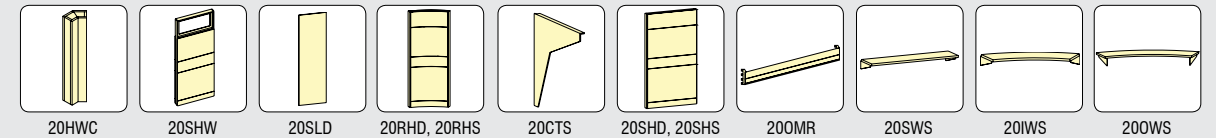
18 Overhead Cabinets



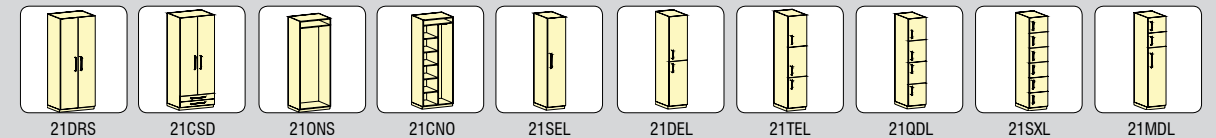
18 Overhead Cabinets



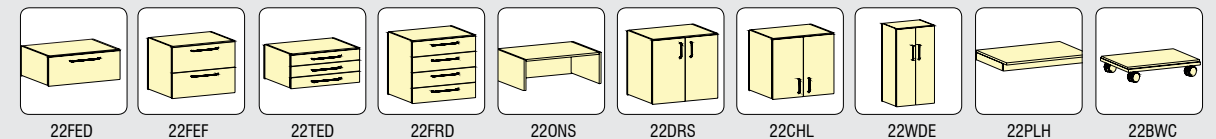
20 Walls



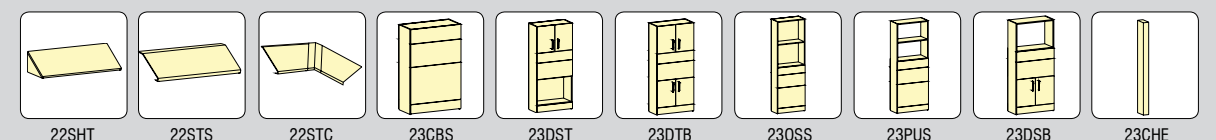
21 Wardrobes and Lockers



22 Stackables



23 Labcore



Business Case

- ✓ Modern, fully engineered, unique, easy to fabricate system
- ✓ Engineered to be produced in a flat panel wood production environment
- ✓ Can be used to construct custom casework, carts & walls
- ✓ Opens new opportunities
- ✓ Marketing support by Cindre, if desired
- ✓ Continuing product development by Cindre LLC
- ✓ Flexible licensing cost
- ✓ Provides competitive advantage



541-241-7793 | mgoelst@cindre.com | www.cindre.com | 61900 Anker Lane, Bend, OR 97702